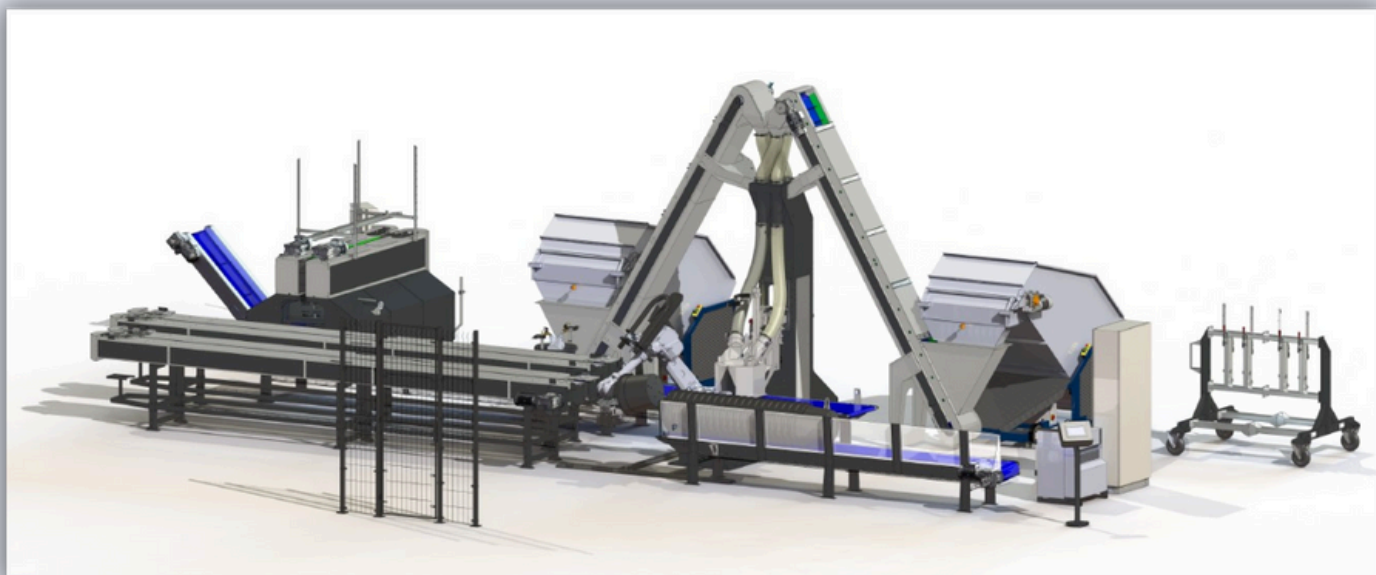


**WHERE INNOVATION
TAKES ROOT**

HR Tree Transplanter Single Module

PATENTED



Potting machine for avenue trees and shrubs

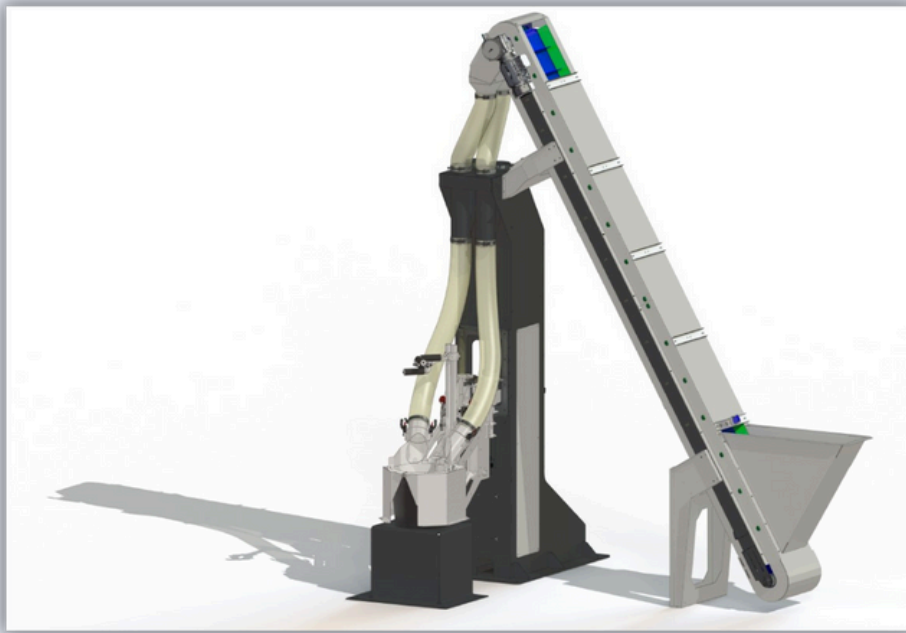
Introducing a new era in tree nurseries with our Potting Line. As the first system of its kind, it uses innovative technology to transport soil into pots and secure trees, reducing the need for manual labor. This patented system offers advanced capabilities designed to improve efficiency and consistency.

A key feature of our Potting Line is its flexibility. In just a few minutes, the system can adjust to different pot sizes and programs. It also offers options for adding bark or water, or potting in bags, customized to your specific needs.

At Horti Robotics, we aim to enhance tree nursery operations by delivering practical, reliable solutions. Our team is ready to work with you to develop a system that fits your unique needs.

Contact us to learn more and explore how we can support your growth goals.

Potting module and soil conveyor



At the heart of our innovation is the Potting Module and Soil Conveyor, a key component in our system's development. This module efficiently handles the transport of potting soil while securely anchoring trees in place, making it a central part of the potting process.

What distinguishes this system is its flexibility, allowing the Horti Robotics Potting Machine to adapt to a variety of needs. The module enables both manual placement and removal of pots and trees before and after potting, while housing the control unit that drives the system. This control unit also supports potential future expansions, ensuring adaptability as your needs evolve.

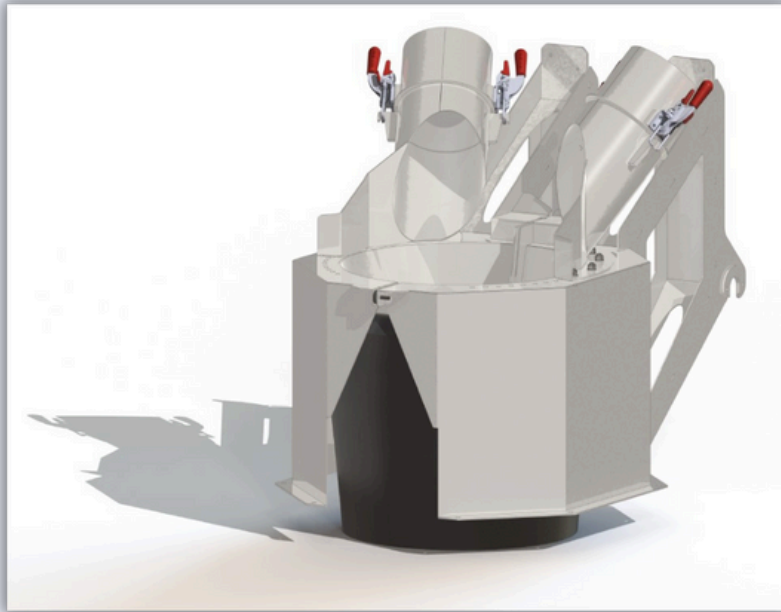
With this setup, the foundation is laid for a smoother, more efficient workflow, opening up opportunities for increased productivity without overcomplicating the process.

Safety fencing



The safety fencing system is an essential feature around automated potting machines in tree nurseries. It acts as a physical barrier, clearly marking the work area and protecting personnel and visitors from potential risks associated with moving machinery. These enclosures help create a safer working environment by preventing unauthorized access to hazardous areas, significantly lowering the risk of accidents. Additionally, the fencing supports compliance with safety standards and regulations, ensuring the well-being of staff and the smooth operation of the nursery.

Set of potting arms



Our potting arms are custom-made for each client, designed to handle a variety of pot sizes and types. They can be tailored to fit almost any pot specification.

Engineered for quick and easy interchangeability, these potting arms can be switched out in under five minutes, allowing for a seamless transition between different products.

The flexibility of our potting arms offers exceptional versatility in your production process. This allows for efficient and rapid switching between different pot sizes or types, boosting productivity and enhancing overall adaptability.

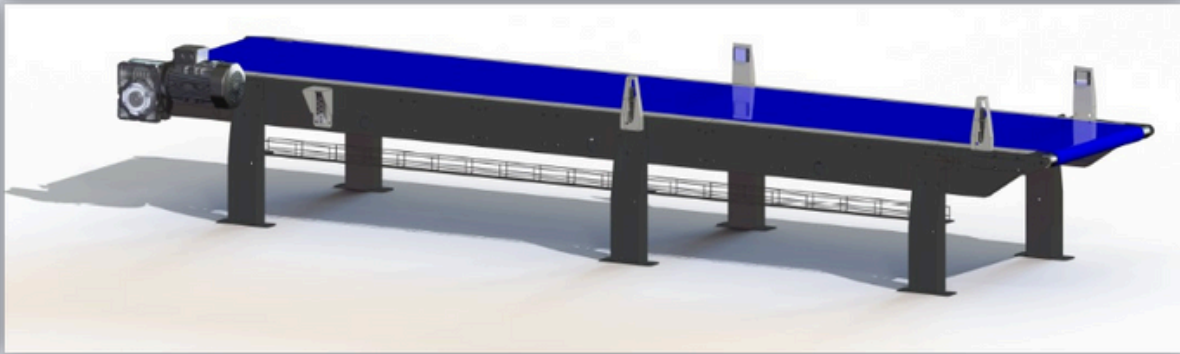
Bark conveyor



By integrating our bark conveyor system, bark is precisely applied to the potting soil, improving efficiency and eliminating the need for manual labor. This results in significant time savings and streamlines the production process by reducing labor-intensive tasks.

In addition to enhancing weed control, the bark conveyor optimizes overall operational efficiency. By incorporating this system, your workflow becomes more streamlined, leading to a more productive and efficient process.

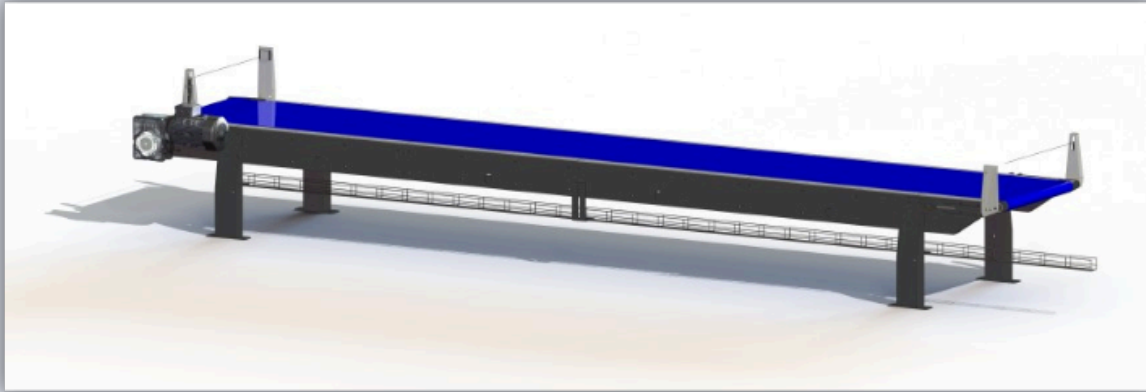
Transport conveyor potting module



The Transport Conveyor Potting Module automates the movement of pots to and from the potting station, reducing the need for manual handling. This promotes a smoother operational flow and a more organized workflow for the operator.

By incorporating this automated feature, the work environment becomes more efficient, minimizing physical strain on the operator and creating a more structured routine. This allows the operator to focus more on precision, ultimately increasing productivity while reducing the risk of errors.

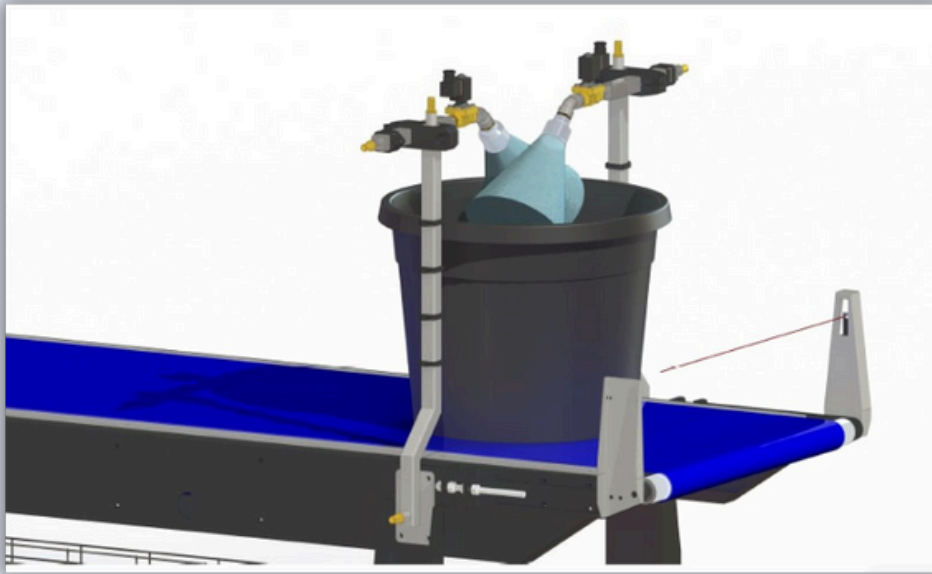
Tree output conveyor 6m



The Tree Output Conveyor option streamlines the handling of potted products from the Transport Conveyor Potting Module. It places them precisely on the conveyor belt, reducing the need for constant operator intervention after each potting cycle. The operator can wait until enough products accumulate on the conveyor before arranging them in sequence on a pallet or cart.

This system enhances workflow efficiency by minimizing the operator's need to move back and forth. By adopting this method, the process becomes more efficient, allowing the operator to focus on other important tasks while the products are collected.

Watering system



The Watering System option is integrated into the process to ensure that plants receive the necessary watering while waiting on the Tree Output Conveyor. This immediate watering benefits the plants, as they would otherwise need to wait until reaching their final destination in the nursery or be watered.

By providing water at this key moment, the system ensures that plants receive the care they need during the production process, promoting better growth and overall health. This direct and efficient approach helps maintain plant quality.

Big bale DB40



The versatile Big-Bale DB40 is an excellent solution for processing compressed big bales, maintaining the original volume and structure of the substrate. It is easy to maneuver and integrates seamlessly with the Horti Robotics potting machine, offering flexibility and adaptability in various production settings.

The DB40's low-maintenance design and diverse options enhance reliability and efficiency in the nursery, making it a valuable addition to optimize the potting process.

While the DB40 provides a standard solution, Horti Robotics is committed to customization. We offer options such as tailor-made dose bunkers for potting soil and can integrate our potting system with existing soil supply systems. Our strength lies in understanding the unique needs of each customer and providing solutions that align perfectly with their requirements.

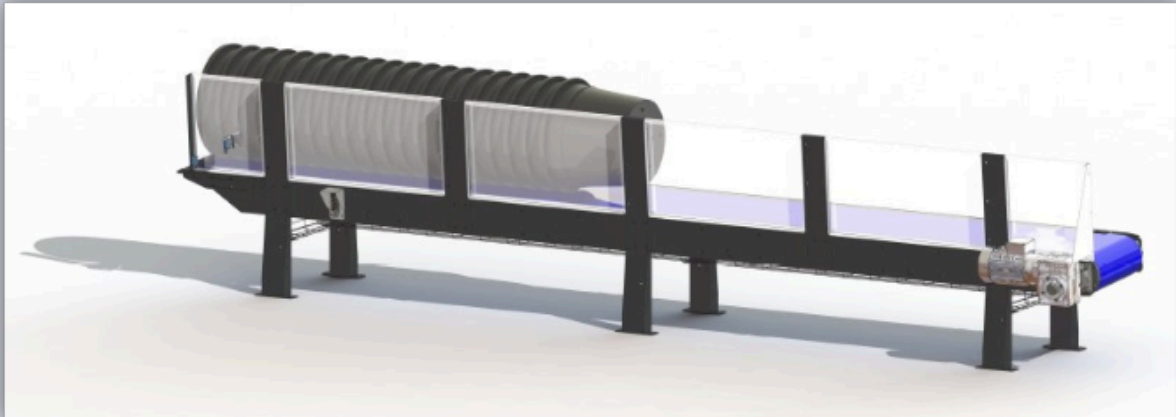
Stand for stets of potting arms



The 'Stand for Sets of Potting Arms' option provides a practical solution for managing multiple potting arms designed for different pot sizes. It offers an organized and portable storage method, enhancing efficiency and convenience in the nursery.

This storage solution helps maintain a clutter-free workspace and reduces downtime during transitions between potting tasks. With an easily accessible stand, selecting and using the appropriate potting arms becomes simpler, ensuring that the nursery's needs are met efficiently.

Pot supply conveyor 6m



The Pot Supply Conveyor option is an advanced system that integrates seamlessly with our robot and tooling. It efficiently manages the destacking of various pot sizes, reducing the need for manual intervention. Using a sophisticated vacuum system, the robot accurately retrieves pots from the stack and places them onto the Transport Conveyor Potting Module.

This automation streamlines the workflow and significantly enhances the overall efficiency and productivity of the potting process. It lightens the operator's workload and improves the accuracy and precision of potting tasks.

However, when using bags with rings, the Pot Supply Conveyor becomes unnecessary. The rings are manually placed and removed, and the bags are positioned on a conveyor belt for transport to the potting module.

Tree input unit 6m



The Tree Input Unit option allows for buffering a large number of avenue trees, reducing the need for the operator to constantly present each tree at the right time. This provides greater flexibility and ensures a steady supply of trees.

The system is particularly effective when used alongside our robot and tooling. With two units positioned side by side, one can be loaded by the operator while the robot unloads the other. This arrangement streamlines the process, improving workflow efficiency and allowing the operator to focus on other important tasks.

Robot IRB46



Using a robot in conjunction with the Horti Robotics potting machine offers an advanced and efficient solution for automating potting processes in tree nurseries. This integration allows the potting machine to operate with precision, while the robot handles tasks such as pot placement, tree transportation, and pot destacking.

The combination of robot and potting machine not only automates but also optimizes the process for speed, accuracy, and flexibility. The result is a streamlined production line where the robot and potting machine work together to minimize labor-intensive tasks and boost productivity.

Robot tree gripper and vacuum gripper



The Robot Tree Gripper and Vacuum Gripper option is designed for the robotic handling of trees and pots. Each pot size requires a custom suction cup, which can be quickly swapped using a quick-release mechanism, along with adaptable tooling to meet specific needs.

This feature is essential for seamless integration with our robotic systems. Its flexibility allows it to handle various pot and tree sizes and shapes, providing customized solutions. By automating these tasks, it significantly reduces manual labor, improving operational efficiency and creating safer, more ergonomic working conditions for your team.

However, this option is not applicable when using bags for potting. In such cases, the gripper system is not required, as the handling of bags is managed differently.

Photo gallery

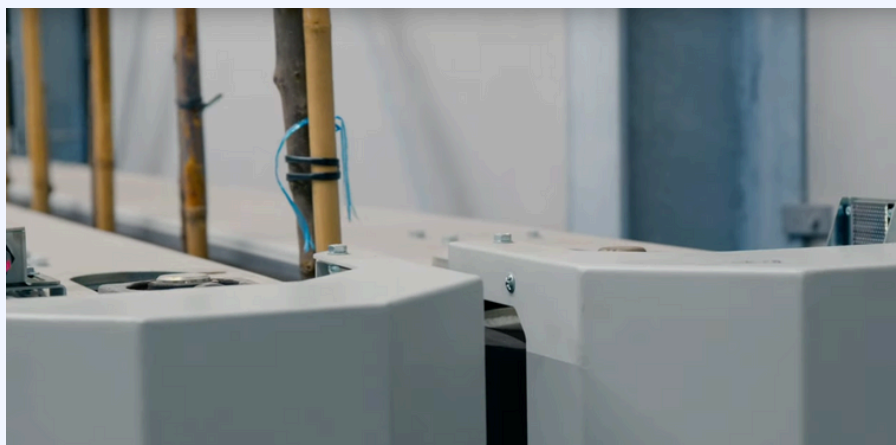
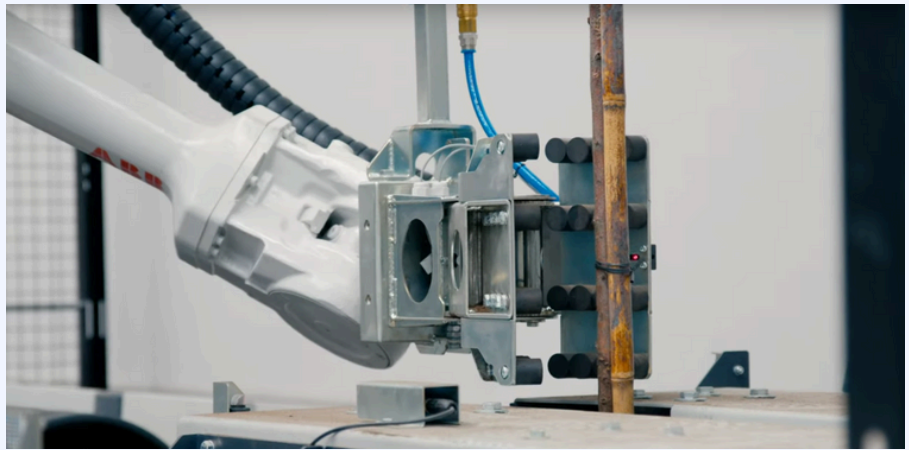


Photo gallery



About **Horti Robotics**

Who We Are

Horti Robotics is a company focused on technological innovation and sustainable horticulture. Our team of experts in robotics and vision technology work together to enhance the future of horticulture by integrating nature and technology.

Our Mission

Our mission is to provide growers with advanced solutions that improve efficiency, sustainability, and productivity in horticulture. We aim to harmonize technology with natural plant growth, ensuring consistent production and high quality at all times.

What Sets Us Apart

At Horti Robotics, we stand out through our commitment to precision, adaptability, and solution-oriented thinking. Our systems are carefully designed to meet the diverse needs of growers with high accuracy and quality. We understand that every nursery is unique, and our solutions reflect that understanding.

Contact
Horti Robotics

Location

Pottenveld 4b
4043 AB Opheusden
The Netherlands

Web

www.hortirobotics.com

E-mail

info@hortirobotics.com